



CHRISTIAN CARE

By providing safe shelter, support, and resources, Christian Care empowers the homeless to make positive changes in every aspect of their lives.

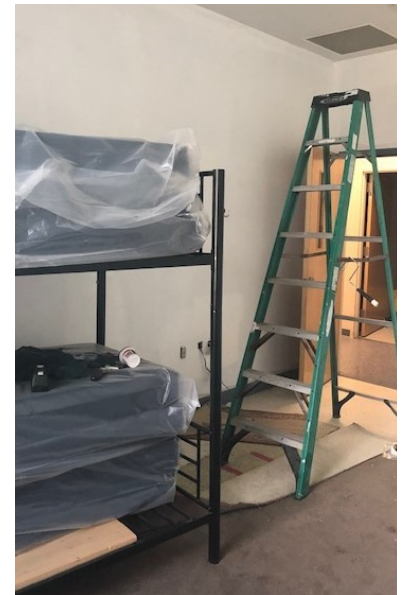
JULY/ AUGUST/ SEPTEMBER 2019

Christian Care Opens More Beds For More Care

Earlier this year, the Board of Christian Care wrestled with the reality that there was a continuous waiting list with more men looking for shelter. “I can’t stand a waiting list,” said Frank Roe, Executive Director, as he led the Board through a strategic planning process that led to a key realization. Christian Care could better utilize its space to open a new dorm, provide 6 more beds, and hopefully cut down that waiting list.

If all goes according to plan, this dorm is scheduled to be opened on June 30. Thanks to grant funding from the Scott County Regional Authority, the cost for Christian Care to open this dorm is minimal, but the impact could be far reaching. The average stay is around 3 months, so these beds will help care for an estimated 24 more men per year, providing an additional 2190 nights of shelter.

“I want to relieve the pressure,” Roe said, “of uncertainty that comes with not having a permanent residence, or food to eat. I want to eliminate the barriers of housing insecurity so we can focus on providing services they need to get back on track.”



Parish Nurse Making a Difference for All



Since April 2018, Christian Care has partnered with UnityPoint-Trinity Parish Nursing & Health Ministry to offer on-site consultative and basic medical services for individuals and their families experiencing homelessness and poverty. This service, open to both Christian Care residents and members of our local community, is designed to take steps to improve the quality of life and enhance the impact of health care needs for our community’s most vulnerable population.

In just one year, Rhonda- our parish nurse- served over 376 visits, averaging over 30/ month. More than 32% of the visits were from female clients, demonstrating that this program is being well used by both residents and non-residents alike. Services focused on blood pressure screenings, health education, and follow up, with only 2 reported ER referrals.

Christian Care is proud to offer this valuable benefit to our community and is excited to see how it will continue to make a difference in the months ahead.

You're Invited . . .

Join us on **Saturday, August 24 from 2-5pm at Christian Care for our Donor Appreciation Picnic!** Come enjoy some good food, hear some great stories, take a brief tour, and see for yourself the difference your gifts are making in the lives of the least, the last, and the lost in the Quad Cities.

Please RSVP at banderson@christiancareqc.org.

The rain date is September 7 from 2-5.



What's New at Christian Care?

"Chip In" for Christian Care!

The John Deere Classic is once again kicking off its **Birdies for Charity** campaign, and it's never been easier to "chip in" to help make a difference! Contact us at banderson@christiancareqc.org to request a pledge form. Then simply make a one-time flat donation OR pledge one cent or more per birdie you think will be made during the John Deere

Classic this year. Be sure to put Christian Care as your charity and #1390 as our bird number.

Completed forms can be dropped off at Christian Care located at 2209 3rd Ave, Rock Island, or mailed directly to Birdies for Charity, 15623 Coaltown Road, East Moline, IL 61244. Forms are due by July 12, 2019.

Food For Families

Christian Care recently started a food giveaway program called Food for Families, designed to offer a full meal for approximately 2-3 individuals or families. Meals are pre-selected and made up ahead of time utilizing current resources, with a priority given to those accessing the program for the first time. Distributions are the last Thursday of the month from 2-4pm. If you have questions or would like to sign up, please call 309-786-5734.

Clothing Donation Changes

At this time, Christian Care is only accepting donations of adult men's clothing. We unfortunately cannot continue to accept donations for women and children. We will continue to take toiletries, paper goods, and food.

Please feel free to contact the following agencies for donations for women and children:

- | | | |
|-----------------------------|-----------------|-----------------|
| * Humility Homes & Services | Davenport, IA | (563) 326- 1330 |
| * Heart of Hope Ministries | Rock Island, IL | (309) 428-4752 |
| * QC Haven of Hope | Rock Island, IL | (309) 788-0692 |

Be sure to mark your calendars for these exciting events coming up with Christian Care! Or follow along on the events page of our website at: <http://www.christiancareqc.org/events.php>



August 24– Donor Appreciation Picnic

September 15– Bunco Blast

October 6– CROP Walk

October 19– Pancake Breakfast

February 8– Have a Heart 2020

Thank You!

Trivia Night 2019

On May 31 Christian Care hosted its annual Trivia Night at the Center for Active Seniors (C.A.S.I.) in Davenport. We were blessed that approximately 200 people came out to play, have fun, and support our shelter and meal site. The money we raised will go directly towards ensuring that we continue to provide services for those in our community who are vulnerable and less fortunate, just as we have for over 100 years. This is specially valuable as we prepare to open 6 new beds in our shelter.



The Vegetable Garden is Growing



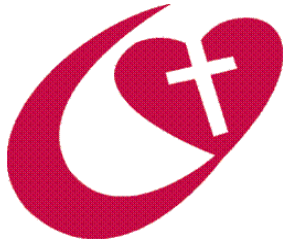
Christian Care is excited to once again plant our vegetable garden! This is a valuable means to help ensure that we offer fresh, healthy alternatives at virtually every meal at our Community Meal Site. We are so thankful for the volunteers who came out to dig, pull weeds, plant seeds, and help care for this garden.

This year we've planted a wide range of veggies and herbs, including lettuce, beets, onions, peppers, radishes, celery, basil, and dill— plus so much more! Come visit us some time to see a beautiful garden and enjoy a delicious salad.

Thank You for Your Help!

We are blessed by so many compassionate community partners and organizations who continue to give generously! We were recently given wonderful gifts of pillows and sheets from Beulah Presbyterian Church (left), handmade quilts from First Baptist Church in Moline (Center), and were again served with fresh produce from the River Bend Food Bank (right) to use at our Fresh Produce Farmer's Market the last Wednesday of each month. Thank you to all of our generous donors who willingly give to help us pursue our mission!





CHRISTIAN CARE

2209 Third Avenue, Rock Island, IL 61201-4176

NON PROFIT ORG.
U.S. POSTAGE PAID
PERMIT #83
ROCK ISLAND, IL
PERMIT NO. 83

Combined Federal Campaign (CFC) Donations Make a Difference!



CFC is the world's largest and most inclusive annual workplace charity campaign throughout the country and overseas. Pledges made by federal, civilian, postal, and military donors during the campaign season will support Christian Care in providing services emphasizing safety, trust, choice, collaboration, and empowerment. Consider giving through the CFC, knowing your gift makes a difference.

This year's pledge drive begins in September and will run through January 2020.



Going Green

Christian Care is **GOING GREEN** with our quarterly newsletters. If you wish to continue receiving a hard copy or wish to go green, please email Steve Gottcent at sgottcent@christiancareqc.org and let us know! We want to ensure you continue to receive our correspondence.



[Facebook.com/christiancareshelter](https://www.facebook.com/christiancareshelter)



[Twitter.com/christiancare9](https://www.twitter.com/christiancare9)



www.christiancareqc.org